

# ENERVAC

## CORPORATION

Engineers and Manufacturers of

Model E361A

### PRESSURE TANKS



#### *Application and Operation*

The pressure tank is one means of feeding oil under pressure to bearings, gears, and pinions. It is also extensively used where non-pulsating flows are desired — or where automatic pressure control of pump operation is preferred.

The tank may be equipped at extra cost with a safety valve, three pressure switches set at different pressures, and a pressure gauge. In actual operation the pressure is reduced as the oil flows from the tank, but when it reaches approximately 48 pounds, the service oil pump automatically cuts in and the oil level is raised until the air pressure is restored again to 54 pounds. Its operation is entirely automatic and the pumps can be operated intermittently if desired. If, for any reason, the service pump should fail to cut in, the spare pump comes automatically into service when the pressure is further reduced. Should the spare pump fail to cut in, the third pressure switch sets in operation a large, continuous-ringing electric gong or Howler.

#### *Exclusive Features*

- ASME code designed, inspected, and labelled
- Complete range of sizes from 35 to 600 gallon capacity
- Pressure rating — 150 P.S.I. — Other ratings optional
- Oil level gauge furnished as standard on all units
- Special equipment such as pressure switches, relief valve, alarm gong etc. readily fitted



Relief Valve



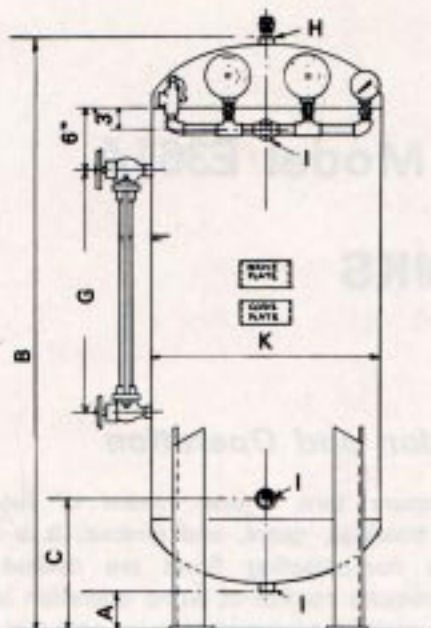
Pressure Gauge



Pressure Switch

ACCESSORIES FOR USE  
WITH PRESSURE TANK

# Pressure Tanks



## Specifications

FINISH: ENERVAC Blue

CONSTRUCTION: Flange steel, all-weld construction. ASME code constructed. Registered with National Board and bears their label. Tanks from 400 Gal. and up have Manhole.

Maximum working pressure 150 p.s.i.

### STANDARD EQUIPMENT:

Gauge glass, two air inlet connections, two oil connections and one drain connection. Connection at top of tank for air relief valve.

### SPECIAL EQUIPMENT AT EXTRA COST:

See optional features

- ASME code designed, inspected, and labelled
- 150 P.S.I.G. rating
- Oil level gauge furnished as standard on all models
- Manway supplied on model size 6 and 7 as standard

### Standard Features

V	Manual Vent Valve (Brass)
D	Manual Drain Valve (Brass)
R	Relief Valve
C2	2 Switch (Gen. Purp. Enclosure) and one Press Gauge — Mounted
C3	3 Switch (Gen. Purp. Enclosure) and one Press Gauge — Mounted
H	Low System Pressure Alarm Howler — (Remote Mounting)
Code	Optional Features

E361A — [ ] — [ ]

Model Size	US Gal Capacity	A	B	C	D	E	F	G	H	I	K	Weight
1	35	8	53	20	20 1/2	16 1/4	9 1/4	12 1/2	1	1	18 1/2	310
2	50	9	66	21	20 1/2	16 1/4	9 1/4	12 1/2	1	1 1/2	18 1/2	360
3	100	9	76	21 1/2	26	19	12	25 1/2	1	1 1/2	24	510
4	200	9	92	24 1/2	32	22	15	25 1/2	1	2	30	760
5	300	11	104	31 1/2	38	25	18	25 1/2	1	2	36	940
6	400	15	106	39	44	28	21	25 1/2	1	3	42	1120
7	600	15	139	39	50	31	24	25 1/2	1	3	48	1560

All dimensions are in inches.

Representative

## ENERVAC

CORPORATION

700 FRANKLIN BLVD., CAMBRIDGE  
ONTARIO, CANADA N1R 5S9  
TEL: (519) 623-9890  
FAX: (519) 623-8250 / (519) 623-4394  
E-MAIL: sales@enervac.com  
WEB SITE: www.enervac.com