

ENERVAC

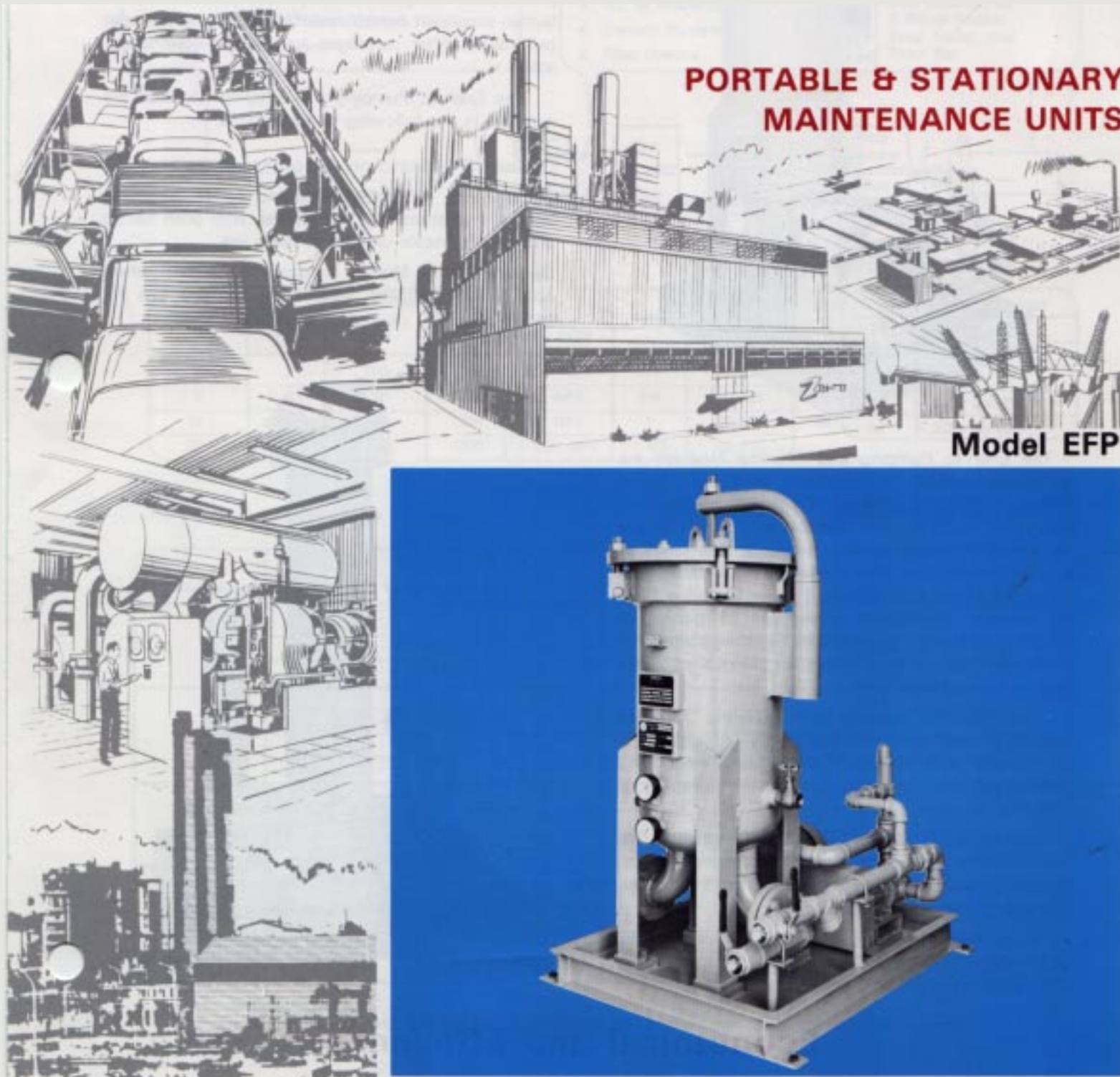
CORPORATION

Engineers and Manufacturers of

PUMP & FILTER MODULES

PORTABLE & STATIONARY
MAINTENANCE UNITS

Model EFP



Extend The Life of Industrial Oils & Solvents with an **ENERVAC** PUMP AND FILTER MODULE



The Enervac Pumping and Filtering Modules are completely packaged compact units for Liquid Filtration. They are provided in a variety of sizes and flow rates, stationary and portable as indicated in the nomenclature and can accommodate a large range of specific applications. The modules are available with either the Model E858A Pleated Paper Cartridge Filter for straight mechanical separation of particulate matter or with the Model E855A Filter/separator with Fibreglass coalescing cartridges for removal of solids and free water from fuels and light oils.

The Enervac Pumping and Filtering Modules provide a most complete and widely applicable line of portable and stationary filter units embodying striking economy, uniformity and interchangeability of filter media.

Lubricating, Hydraulic, Quench and Insulating Oils are maintained refinery pure by the removal of dirt, sludge, carbon and metal particles as well as water, gums, tars, resins and asphaltenes.

All equipment is mounted on a structural steel base with drip pan and is completely interconnected and wired ready for field service.

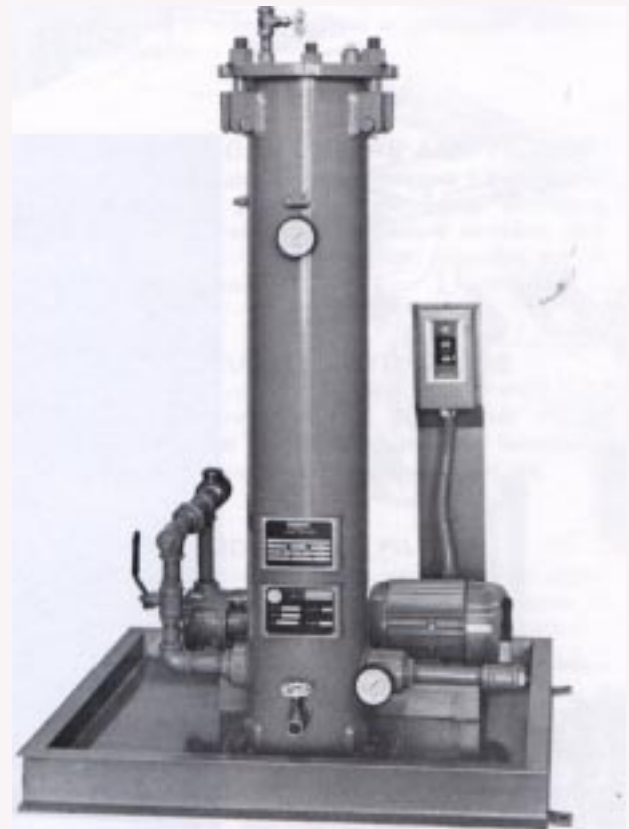
The pumps are rotary positive displacement gear type c/w T.E.F.C. electric motors and can handle viscosities to 750 SSU and provide discharge pressures to 50 p.s.i. Units are complete with push button stop/start control, relief valve, inlet and outlet ball valves. Filter cartridges are quickly interchangeable.

The Enervac Pumping and Filtering Modules are supplied in the following configurations.

Option "S" - Stationary for permanent installation.

Option "P" - Portable. Mounted on 6" neoprene wheels, two stationary, two swivel, with push bar to provide a portable unit for in plant use.

Option "M" - Mobile, mounted on a two wheel dolly with Pneumatic tires, draw bar and eye for portability.



Economical and Efficient

MODEL NOMENCLATURE CHART

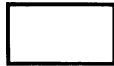
- Standard Features**
- Steel Base with Drip Tray
 - Positive Displacement Pump c/w TEFC Motor
 - Motor Starter - Push Button Type
 - System Relief Valve
 - Filter, ASME 150 lbs. Designed and Stamped
 - Filter Elements - Selectivities 1/2, 1, 5, 10, 20, 30 Microns
 - Inlet and Outlet Pressure Gauges
 - Vent and Drain Valves

Model Nomenclature Chart indicates standard and optional features available with each model. Complete flexibility is provided by selection of the type of Operation, Electrical Input, Etc.

- Filter**
- Filter Type
 - No. of Elements
 - Element Number
 - Filter Options

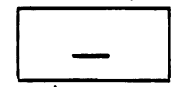
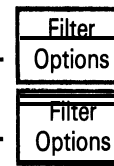
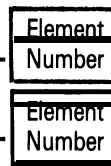
Type	
S	Stationary Model
P	Portable Model 6" Neoprene Casters 2 Swivel, 2 Stationary
M	Unit mounted on 2 Wheel Rubber Tired Trailer, c/w Draw Bar

EFP



B

E858A
E855A



Code	USGPM	Maximum Viscosity SSU	Pump RPM	Pump IN / OUT	H.P.	Pump Discharge
3	3	750	1200	1/2" NPT	1/4	50 PSI
6	6	750	1200	1" NPT	3/4	50 PSI
10	10	750	1200	1" NPT	1	50 PSI
20	20	750	1200	1-1/2" NPT	1-1/2	50 PSI

Code	Electric Power
21	220 / 1 / 60
22	220 / 3 / 60
38	380 / 3 / 50
46	460 / 3 / 60
57	575 / 3 / 60

Note: For more details on Filters and Filter Elements refer to Sales Bulletins 1.10000 and 1.50000.

USGPM	No. Of Elements *	Approx. Weight Lbs.	A	B	C	D	E
3	2	435	36	34	56	1/2	1/2
	3	655	36	40	48	1/2	1/2
	6	730	36	40	68	1/2	1/2
6	2	470	36	34	56	1	1
	3	725	36	40	48	1	1
	6	800	36	40	68	1	1
	8	1170	36	48	68	1	1
10	2	495	36	34	56	1	1
	3	740	36	40	48	1	1
	6	815	36	40	68	1	1
	8	1185	36	48	68	1	1
20	2	570	36	34	56	1-1/2	1-1/2
	3	825	36	40	48	1-1/2	1-1/2
	6	900	36	40	68	1-1/2	1-1/2
	8	1270	36	48	68	1-1/2	1-1/2

* See Element Flow Charts to determine maximum capacity based on type of element and Micron selectivity.

ENERVAC produces a wide range of specialty products and systems, most of which are based on a high order of technology.

Solving Tomorrow's Problems TODAY

HIGH VACUUM DEGASIFICATION

For upgrading of new and used electrical insulating liquids, transformer oil, polybutenes and silicones – the removal of free and soluble water, free and dissolved air and gases and particulate matter. Mobile and stationary units in sizes to fit every need.

SEAL-OIL PURIFIERS

Seal oil purifiers offer proper treatment and upgrading of compressor sealing oils in a completely enclosed system, removal of free and soluble water, free and dissolved air and gases, light hydrocarbons and particulate matter.

LUBE SYSTEMS

Oil circulating lubrication systems including pumps, tanks, filters, coolers, indicators and other accessory equipment in either packaged or component systems are available.

AIR AND GAS DRYERS AND FILTERS

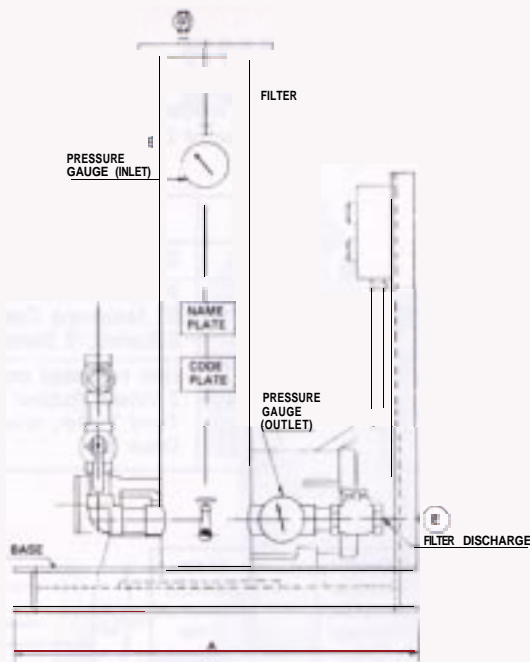
Enervac dryers and filters are designed for removal of moisture from process air and gases, eliminating condensation and freezeup, moisture corrosion, protecting pneumatic instruments and extending the life of pneumatic tools.

VACUUM DEHYDRATORS

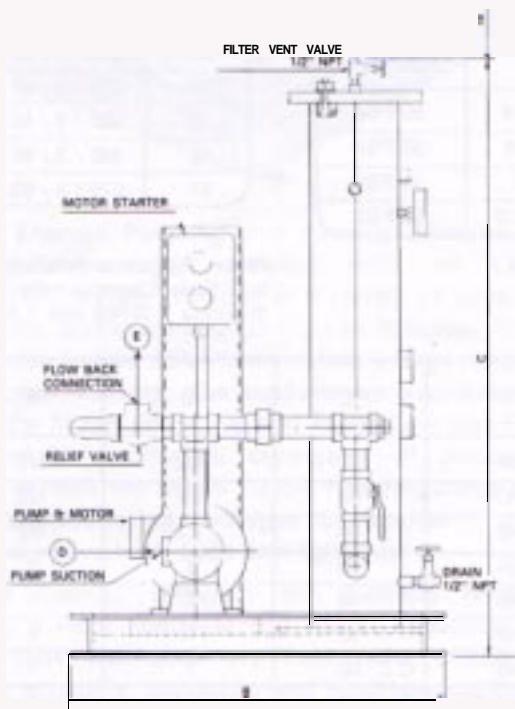
Low vacuum units are available from Enervac Corporation for the continuous maintenance of the original chemical and physical qualities of lubricating, insulating, cooling, hydraulic and synthetic oils.

INDUSTRIAL FILTERS

Industrial filtration equipment utilizing pleated paper, and other media to provide the exact degree of filtration and flow rate for virtually any application.



CLEARANCE REQUIRED TO REMOVE ELEMENTS



Representative

ENERVAC
CORPORATION

700 FRANKLIN BLVD., CAMBRIDGE
ONTARIO, CANADA N1R 5S9
TEL. (519) 623-9890
FAX (519) 623-8250 (519) 623-4394