

Fuller's Earth Filtration

E575A Series



for

Power Companies

and the

Electrical Industry

ENERVAC
CORPORATION

FOR TRANSFORMER OIL UPGRADING AND RECLAMATION

Fuller's Earth oil filters are used for removal of acids and soluble surface acting contaminants by adsorption.

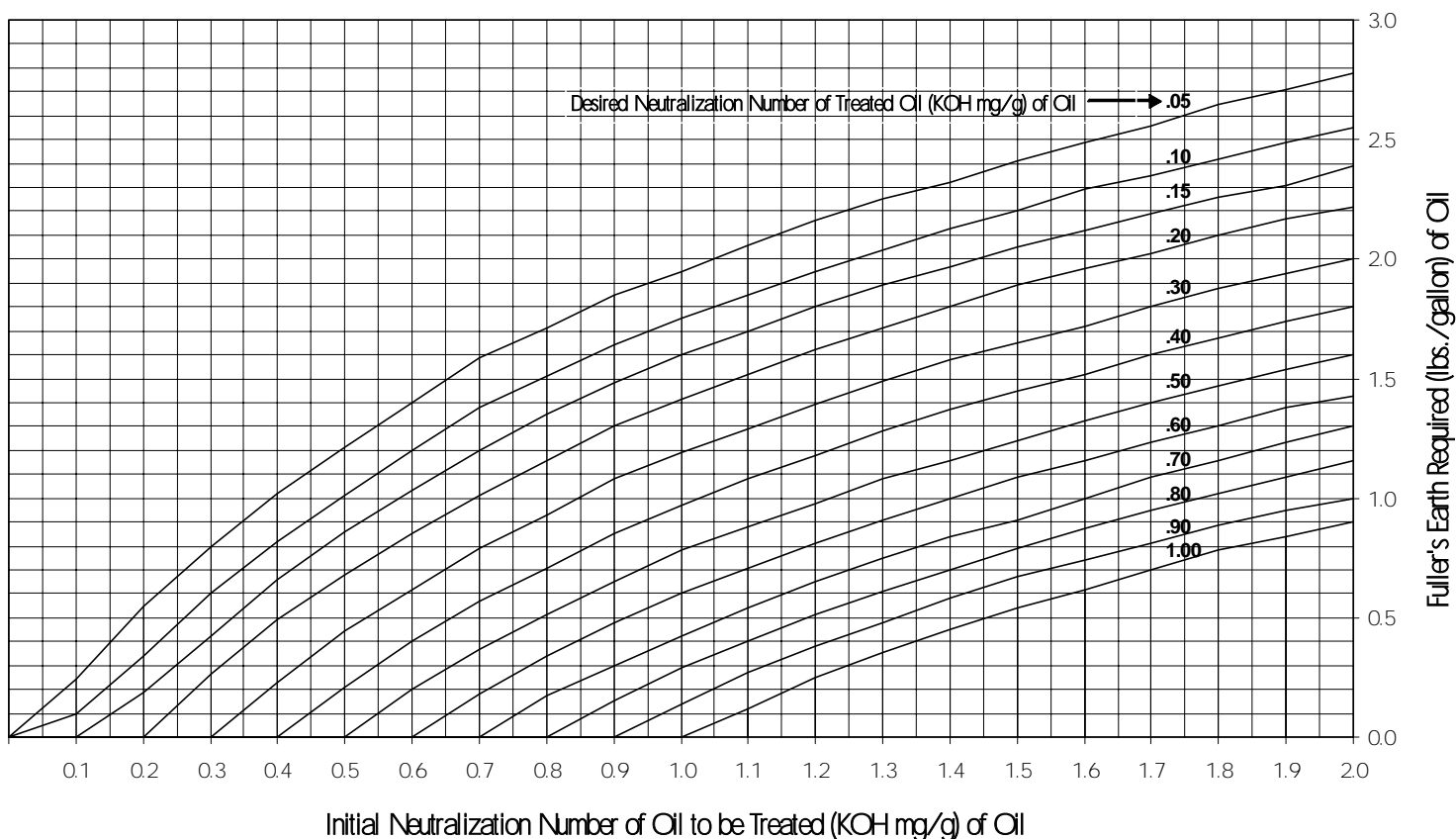
Treatment with Fuller's earth will increase the IFT (Interfacial Tension) of oil and reduce the PF (Power Factor) to desired levels. When water and some volatile acids are removed from oil through a prior vacuum process, adsorptive capacity of Fuller's Earth for removal of remaining soluble contamination is greatly extended. Positive protection assures migration-free, sparkling clean effluent. All acids, gums, resins and other surface acting soluble contaminants are trapped and held within the media.

SPECIAL STATIONARY:

1000, 2000 & 3000 lb. towers, single or dual, available upon request

In the reclamation of oils, acid correction is the most critical requirement. The following chart shows the estimated quantity of Fuller's Earth required to reduce the acidity of an oil to the desired level.

Adsorption By Fuller's Earth



EXAMPLE:

Assume that a spent oil has a Neutralization Number of 1.0 mg KOH/g of oil. In order to reduce the Neutralization Number to 0.5, approximately 3/4 lb. of Fuller's Earth will be required for each gallon of oil treated.

Model Nomenclature Chart

S	Towers mounted on elevated structural steel frame, common base with drip pan. Bottom dump.
T	Towers designed for through floor dump. Can be used in plant and trailer mounting.
D	Towers designed for Tilt dump through doors when mounted.

E575A



Standard Features
o Vessels ASME Code design
o 150 psig design pressure
o Inlet & Outlet ball valves
o Header assembly complete with valves so towers can be used in series or parallel
o Trap filter (Vacuum Line)
o Vacuum loading facilities for filling of chambers
o Inlet & Outlet flow sights
o Manual type cover closing device

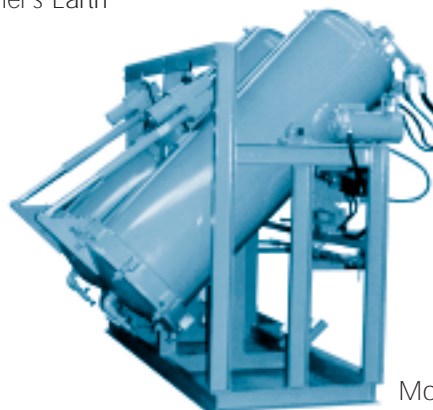
Optional		
Electrical Input	11	115 Volt - 1 P - 60 Hz
	24	240 Volt - 1 P - 50 Hz
Filters	P	Pre-Filter - 15 micron
	A	After Filter - 0.5 micron
Pump	P1	Inlet Pump and Controls
Inlet Heaters and Controls	H24	Heater 240 Volt - 3 P - 60 Hz
	H46	Heater 460 Volt - 3 P - 60 Hz
	H57	Heater 575 Volt - 3 P - 60 Hz
	H38	Heater 380 Volt - 3 P - 50 Hz
Misc.	V	Vacuum Pump and Controls
	C	Compressor and Controls
	E	Heat Tracing and Controls
	D	Self Dumping Hopper
	C1	Pneumatic
	C2	Hydraulic
	C3	Electric (Standard on Code "D")

PORTABLE AND STATIONARY UNITS

Model No.	Code	Inlet & Outlet Connections		Height	Width	Depth	Dry Weight *
200	S			150"	72"	48"	2950 lbs.
	T	1"	1"	72"	68"	48"	1750 lbs.
	D			72"	68"	64"	2250 lbs.
400	S			170"	72"	48"	3150 lbs.
	T	1"	1"	96"	68"	48"	1950 lbs.
	D			96"	64"	64"	2450 lbs.
600	S			180"	96"	54"	3500 lbs.
	T	1"	1"	96"	80"	54"	2100 lbs.
	D			96"	76"	76"	2900 lbs.

Model nomenclature chart indicates standard and optional features available with each model. Complete flexibility is provided by selection of flow rate, operating pressure, electrical input, NEMA class, miscellaneous options and instrumentation.

* Does not include the weight of Fuller's Earth



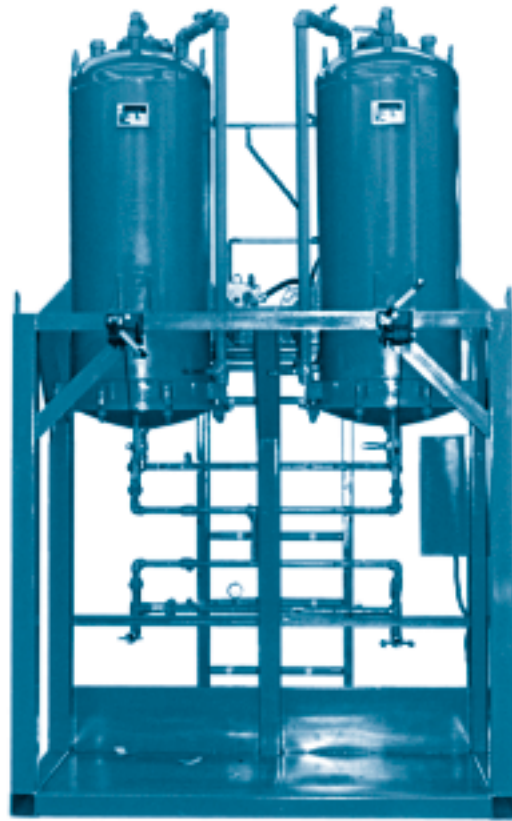
Model E575A-600-D-11

Description

This line of Fullers Earth Packed Column Systems is the latest in design and provides many advantages over other methods of processing oils with attapulgus clay. It eliminates the high cost of throwaway cartridges, the labour involved in re-fillable canisters and bags and provides a modern approach to adsorption.

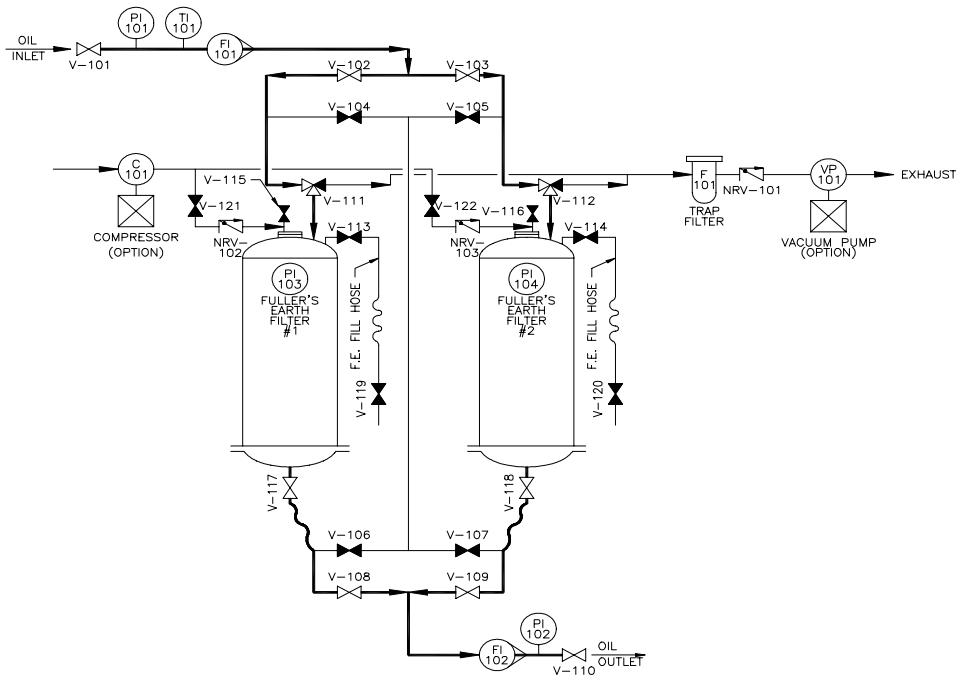
Its easy vacuum fill, its quick bottom dump and its better utilization of clay, all indicate this is the approach the large user of clay should consider.

The Packed Column System is the ideal system for the electrical industry and for the utility for processing insulating oils. It also has many applications in general industry such as Roll Oils, Quench Oils, Turbine Oils, Engine Oils and Hydraulic Oils. The process not only corrects acidity but also removes dirt, dust, carbon, gums, resins, abrasives and oxidation products. It provides complete and dependable protection against costly oil contamination and gives increased operating efficiency to produce better precision products.



Model E575A-600-S-11

Flow Schematic



Representative:

ENERVAC
CORPORATION

700 Franklin Blvd., Cambridge, Ontario, Canada N1R 5S9
Tel.: (519) 623-9890 • Fax: (519) 623-8250
www.enervac.com • E-mail: sales@enervac.com