

# ENERVAC

C O CORPORATION

Engineers and Manufacturers of

**Model E206A**

## AUTOMATIC WATER EJECTOR



### *Application*

The Enervac Model E206A Automatic Water Ejector or Automatic Water Leg as it is sometimes referred to, is designed to automatically eject free water that has settled out in the precipitation compartment of an Oil Receiving Tank. It is used extensively in Oil Circulating Lubrication Systems in Steel Mills and Paper Machines where large amounts of water are apt to accumulate in the oil or in reclamation systems where water is one of the contaminants.

*Note:* The Automatic Water Ejector does not work successfully on Detergent-Dispersent oils as they are designed to carry water in suspension.

### *Operation*

The operation of the Enervac Model E206A Automatic Water Ejector is quite simple. It has no moving parts, therefore nothing to go wrong. The adjustable fount assembly is installed on a stand pipe connected to the bottom of the Precipitation Compartment. The adjustable fount when extended above the basin should be at an equal height with the weir separating the precipitation compartment from the rest of the settling or storage compartments of the tank. Prior to filling the tank with oil 6" of water is put in the bottom of the precipitation compartment covering the outlet to the stand pipe supporting the Automatic Water Ejector. When the precipitation compartment is filled with oil the water will rise up the stand pipe to the adjustable fount. When the oil has reached a level where it is flowing over the weir into the settling and storage compartment of the tank, the fount can be adjusted downward to the point of interface with the water in the stand pipe. The unit is now ready for operation. Any additional water that settles out in the precipitation compartment will automatically overflow the fount into the overflow basin and hence to drain.

# Automatic Water Ejector

## Specifications

BASIN— Mild Steel - Welded construction. Cadmium Plated to prevent corrosion.

FOUNT— Mild Steel - Cadmium Plated to prevent corrosion.

STAND PIPE CONNECTION— 2" N.P.T.

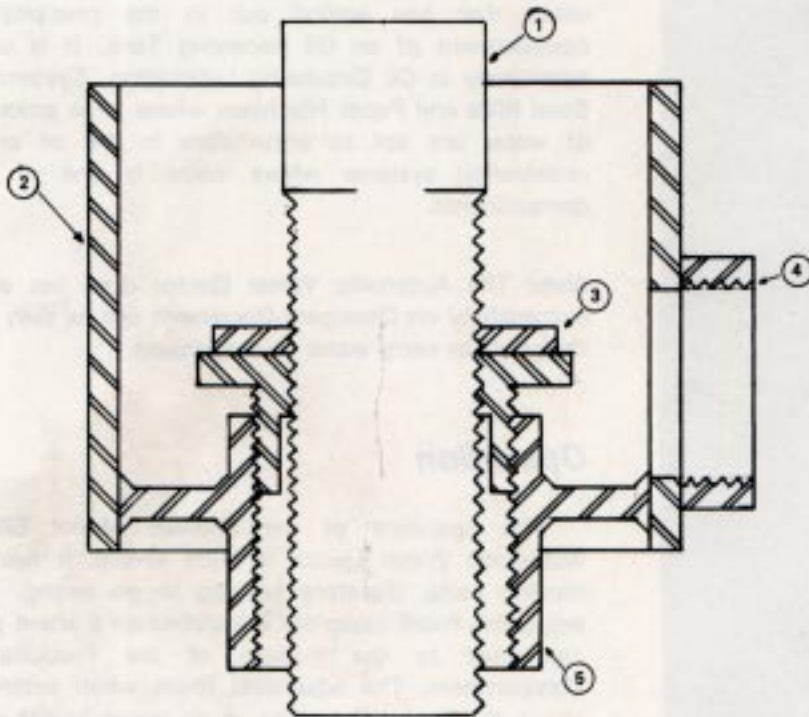
BASIN OVERFLOW CONNECTION— 1 1/2" N.P.T.

STAND PIPE— 2" Supplied by others

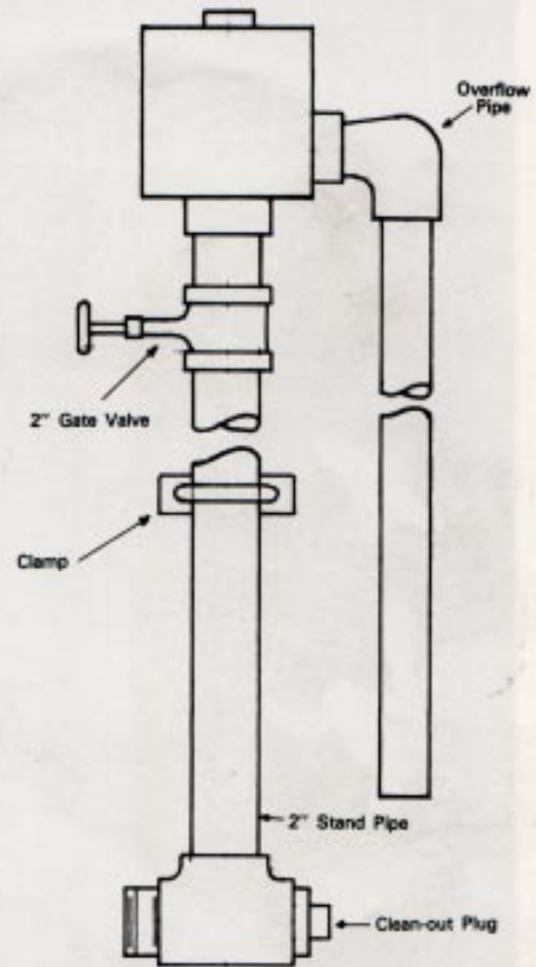
GATE VALVE— 2" Supplied by others

BASIN OVERFLOW— 1 1/2" Supplied by others

Fount Assembly



1. Fount
2. Basin
3. Locknut
4. Overflow Connection
5. Stand Pipe Connection



Recommended Typical Installation

Representative

**ENERVAC**

CORPORATION

700 FRANKLIN BLVD., CAMBRIDGE  
ONTARIO, CANADA N1R 5S9

TEL: (519) 623-9890

FAX: (519) 623-8250 / (519) 623-4394

E-MAIL: sales@enervac.com

WEB SITE: www.enervac.com