

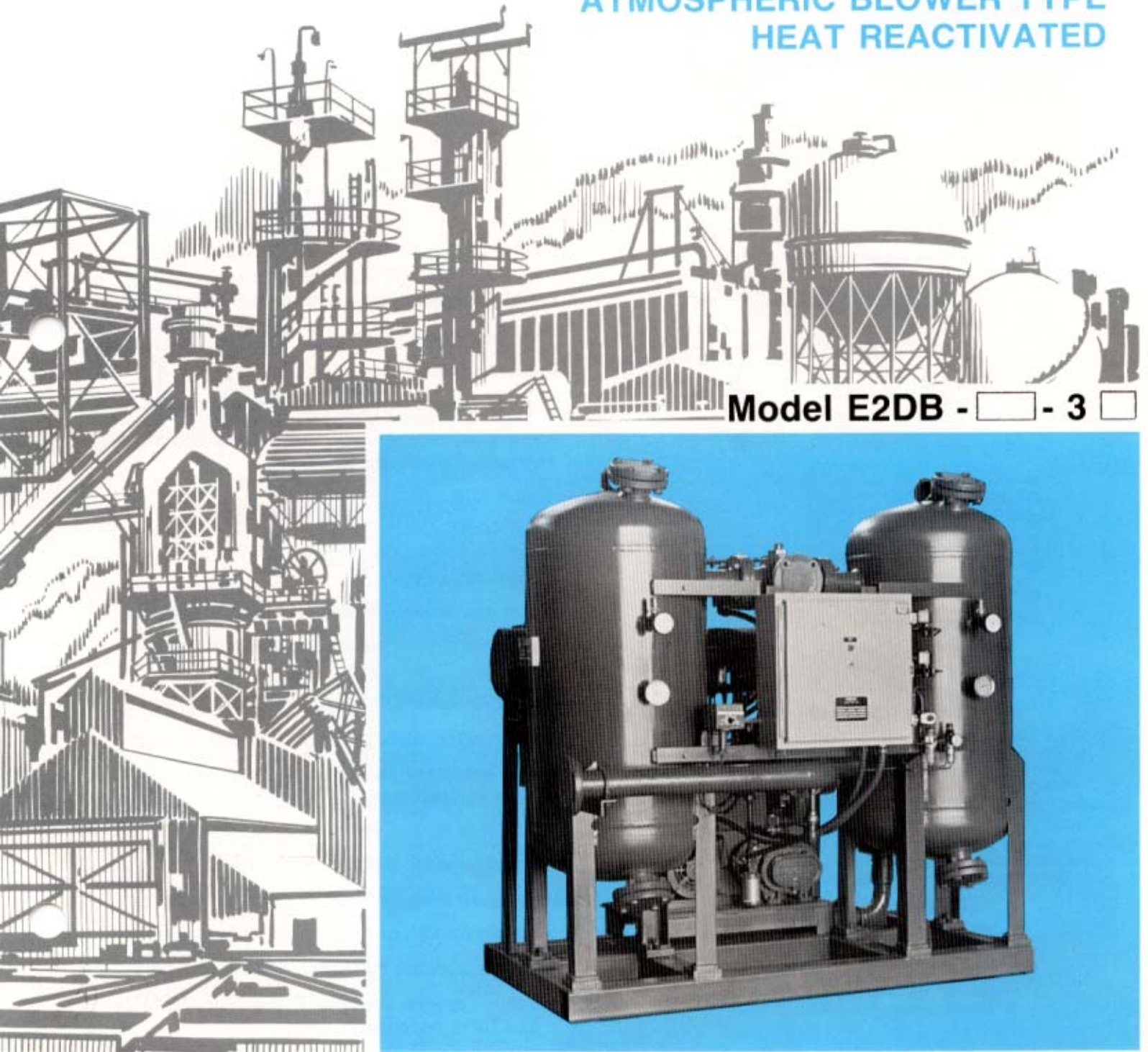
ENERVAC

CORPORATION

Engineers and Manufacturers of

AIR and GAS *DRYERS*

ATMOSPHERIC BLOWER TYPE
HEAT REACTIVATED



Model E2DB - - 3

Model E2DB - - 3

Description

Enervac Model Type 3 incorporates industry's most common requirements as standard features. It is engineered with the most up-to-date adsorption and mechanical technology. As pioneers in Dehydration, we assure that this model is the ultimate development of its kind.

All models are designed to maintain a continuous dry gas flow, have two identical chambers filled with desiccant and drying will alternate (down flow) from one chamber to the other.

Dry air outlet continuity is maintained by alternating flow from one chamber to the other at regular intervals. Restoration of exhausted desiccant is attained by heating and cooling periods utilizing a Blower at atmospheric pressure for heating and a very small portion of dry air to assist in bed cooling.

A variety of optional features are offered and selection should be referred to the model nomenclature chart.

Application

Removes moisture from process air and gases.

Eliminates condensation.

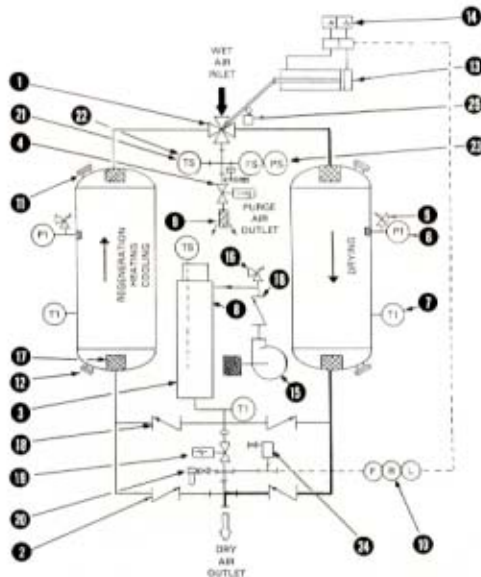
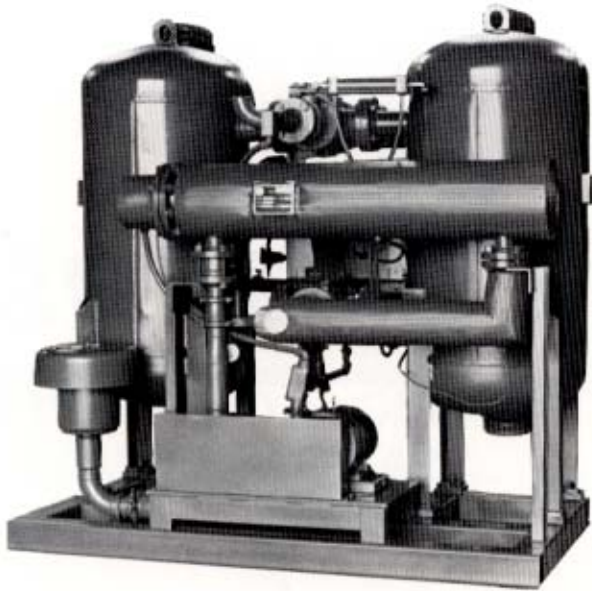
Prevents moisture corrosion.

Protects pneumatic instruments, valves and tools.

Eliminates freeze-up under winter conditions and permits use of pneumatic systems.

Features

- Simplified design.
- Low maintenance costs . . . fewer parts.
- Pneumatically operated, 4-way teflon sealed main valve.
- Ideal for flows 200 to 10,000 SCFM and over.
- Minus 40°F outlet pressure dewpoint or better.
- Ambient temperature from 35 to 130°F without requiring insulation.
- Heater is NOT in contact with desiccant.
- Stainless steel desiccant bed screens.
- Nema 12 dustproof control cabinet.
- 8 Hour Nema cycle (std.). Other cycles available.
- Design pressure 150 psig.
- Various options available. See MODEL NOMENCLATURE opposite.



STANDARD EQUIPMENT

- | | |
|---------------------------------|--|
| 1. Main 4-Way Switching Valve | 11. Desiccant Fill Connections |
| 2. Outlet Air Check Valves | 12. Desiccant Drain Connections |
| 3. Heater c/w Thermostat | 13. Pneumatic Operator for Main Valve |
| 4. Purge and Dump Valves | 14. 3 Way Solenoid Valves N.C. |
| 5. Pressure Relief Valves | 15. Regeneration Blower c/w Intake Filter Silencer |
| 6. Pressure Indicators | 16. Regeneration Blower Relief Valve |
| 7. Temperature Indicators | 17. Stainless Steel Desiccant Screens |
| 8. Heater Case Insulated | 18. Purge Air Check Valves |
| 9. Purge Air Muffler | 19. Cooling/Repressurization Valve |
| 10. Filter-Regulator-Lubricator | |

OPTIONAL EQUIPMENT

- 20. Option "C" Colour Dew Point Indicator c/w Valve
- 21. Option "Z" Bed Over Temperature Protection
- 22. Option "Z1" Reactivation Termination Control
- 23. Option "R" Purge and Dump Failure Alarm
- 24. Option "H" High Humidity Alarm ("H1" Same)
- 25. Option "S" Switching Failure Alarm (Limit Switch)

MODEL NOMENCLATURE

| | |
|------|------------------|
| S | Steam heaters |
| E | Electric heaters |
| Code | Regeneration |

| | |
|------|--|
| T | Automatic operation with Totalizing Timer. Switching will occur when compressor running time has totalled the pre-set cycle time on dryer control. |
| D | Automatic operation with Demand Cycle Controller Switching on maximum water adsorption. Includes high humidity alarm. |
| A | Automatic operation. All functions are initiated by a control timer. Includes manual override. |
| Code | Dryer Operation |

E2DB - - **3** - -

- SIZE — STANDARD FEATURES**
- Nema 1 Electrics
 - Nema 12 Enclosure
 - 8 Hour Nema Cycle
 - 150 psig Design Pressure
 - Chamber Pressure Gauge
 - Chamber Thermometer
 - Chamber Relief Valve
 - Thermostatically Controlled Heater
 - Solid State-Fail Safe Electronic Temperature Controller
 - Plug in Relays
 - Stainless Steel Desiccant Bed Screens
 - 4-Way Teflon Sealed Switching Valve
 - Minus 40°F Dew Point at Pressure

| | Code | Option |
|---------------------------|-------------------------------|--|
| NEMA CYCLE | G M K | 12 Hours 16 Hours 24 Hours |
| ELECTRICAL INPUT | 22 38 46 57 | 220 volt / 3 ph / 60 cy 380 volt / 3 ph / 50 cy 460 volt / 3 ph / 60 cy 575 volt / 3 ph / 60 cy |
| ELECTRICAL CLASSIFICATION | 4 7 12 | Nema 4 Water Proof Nema 7 Explosion Proof Nema 12, Dust Proof |
| ALARMS | S R H1 H | Switching Failure Purge and Dump Failure High Humidity, 1% R.H. High Humidity, -30 to -80°F Dew Point |
| INSTRUMENTATION | L C Z Z1 W1 W2 | Cycle Indicating Lights Colour Dew Point Indicator Bed Overtemp. Protection Reactivation Termination Control Hygrometer indicating with alarm Hygrometer indicating with alarm and recording ** |
| MISCELLANEOUS | 2 5 6 8 9 X | Insulation - Chambers Only No Copper Bearing Alloys All Steel Construction S.S. Tubing Only # 3000 lb. Fittings Special Engineering |

**Compressed Air
Moisture Problem?**

**Let Enervac
Solve It For You!**

| Model No. | Inlet / Outlet Connections | Length | Width | Height | Shipping Weight lbs. |
|-----------|----------------------------|--------|-------|--------|----------------------|
| 65 | 1" NPT | 40" | 52" | 76" | 910 lbs. |
| 105 | 1.5" NPT | 48" | 52" | 65" | 1440 lbs. |
| 155 | 1.5" NPT | 48" | 52" | 81" | 1600 lbs. |
| 215 | 2" NPT | 59" | 54" | 72" | 1850 lbs. |
| 325 | 2" NPT | 59" | 54" | 84" | 2100 lbs. |
| 425 | 3" 150# FLG | 68" | 60" | 72" | 2600 lbs. |
| 525 | 3" 150# FLG | 76" | 60" | 84" | 2900 lbs. |
| 725 | 4" 150# FLG | 76" | 60" | 94" | 3700 lbs. |
| 860 | 4" 150# FLG | 102" | 66" | 86" | 4300 lbs. |
| 1005 | 4" 150# FLG | 102" | 66" | 96" | 5500 lbs. |
| 1305 | 4" 150# FLG | 114" | 66" | 108" | 5900 lbs. |
| 1505 | 6" 150# FLG | 114" | 66" | 118" | 7500 lbs. |
| 1805 | 6" 150# FLG | 120" | 72" | 108" | 11500 lbs. |
| 2105 | 6" 150# FLG | 120" | 72" | 120" | 12000 lbs. |
| 2505 | 8" 150# FLG | 135" | 80" | 108" | 15000 lbs. |
| 2905 | 8" 150# FLG | 135" | 80" | 120" | 16500 lbs. |

NOTES:

** Not Available in Nema 7.

All dimensions are in inches and weights in pounds. (Approximate).

Model Nomenclature Chart indicates standard and optional features available with each model. Complete flexibility is provided by selection of the type of Dryer Operation, Electrical Input, Electrical NEMA Class, Nema Cycle, Alarms and instrumentation.

**Moisture in your
Compressed Air is Costing
You Money.**

ENERVAC

produces a wide range of specialty products and systems, most of which are based on a high order of technology.

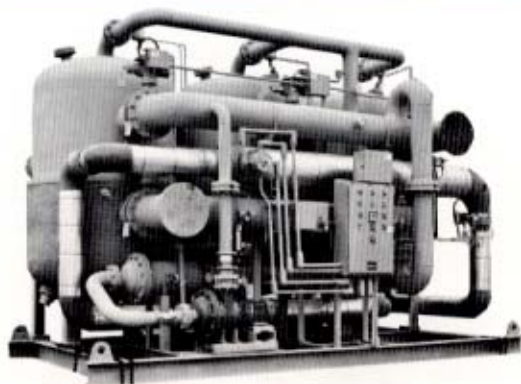
Solving Tomorrow's Problems TODAY



5E Type Closed Loop Zero Purge



7H Type Heatless Regeneration



Custom Design Units for large flows

HIGH VACUUM DEGASIFICATION

For upgrading of new and used electrical insulating liquids, transformer oil, polybutenes and silicones — the removal of free and soluble water, free and dissolved air and gases and particulate matter. Mobile and stationary units in sizes to fit every need.

SEAL-OIL PURIFIERS

Seal oil purifiers offer proper treatment and upgrading of compressor sealing oils in a completely enclosed system, removal of free and soluble water, free and dissolved air and gases, light hydrocarbons and particulate matter.

LUBE SYSTEMS

Oil circulating lubrication systems including pumps, tanks, filters, coolers, indicators and other accessory equipment in either packaged or component systems are available.

AIR AND GAS DRYERS AND FILTERS

Enervac dryers and filters are designed for removal of moisture from process air and gases, eliminating condensation and freezeup, moisture corrosion, protecting pneumatic instruments and extending the life of pneumatic tools.

VACUUM DEHYDRATORS

Low vacuum units are available from Enervac Corporation for the continuous maintenance of the original chemical and physical qualities of lubricating, insulating, cooling, hydraulic and synthetic oils.

INDUSTRIAL FILTERS

Industrial filtration equipment utilizing pleated paper, and other media to provide the exact degree of filtration and flow rate for virtually any application.

Representative

ENERVAC
CORPORATION

280 HOLIDAY INN DRIVE
CAMBRIDGE, ONTARIO, CANADA N3C 1Z4
TEL # (519) 651-1034 FAX # (519) 651-1038
WWW.ENERVAC.COM SALES@ENERVAC.COM