

Portable Filter System

OIL MAINTENANCE UNIT



Model EPF-1B

ENERVAC
CORPORATION



Often returns its cost in first few months

Today your hydraulic, lubricating and synthetic oils are too expensive to waste. They are in short supply and for environmental reasons are more difficult to dispose of.

Oil is the lifeblood of your machines. Constantly moving, working, controlling. But work makes dirt and dirt reduces system efficiency. Temperatures rise and the oxidation rate accelerates forming sludges and varnishes. When you keep your oil clean, you keep your machines running smoothly at peak performance. The ENERVAC system is designed to clean oil when and wherever you need it without stopping your machines!

By making sure the oil you use is clean, you will save wear and tear on your equipment, reduce maintenance costs and save yourself the expense of frequent component replacement.

Applications

- LUBRICATING OILS
- HYDRAULIC OILS
- TURBINE OILS
- COMPRESSOR SEAL OILS
- SYNTHETIC FLUIDS
- INSULATING OILS
- CUTTING AND COOLING OILS
- QUENCHING OILS
- VACUUM PUMP OILS
- SOLVENTS

Specifications

FLOW - 6 US Gallons per minute
FLUID - Hydraulic or lube oil, 600 SSU max.
PUMP DISCHARGE PRESSURE - 50 psig
MOTOR - 1/3 HP, 1200 rpm capacitor start
POWER REQUIREMENT - 120 VAC-1P-60Hz, 10 amp
POWER CONNECTION - 15 ft. 3-conductor rubber insulated power cable
HOSES - one suction and one discharge (optional)
DOLLY - Two wheel with double handles. Wheels 8" dia. Polyolefin 600 lbs. capacity
FILTRATION - Standard unit equipped with Enervac model EP-718-10 filter element (10 micron) or as specified
INLET STRAINER - Y Type 25 mesh
FINISH - Enervac Blue
DRY WEIGHT - 125 lbs.

EXTEND THE LIFE OF COSTLY AND SCARCE

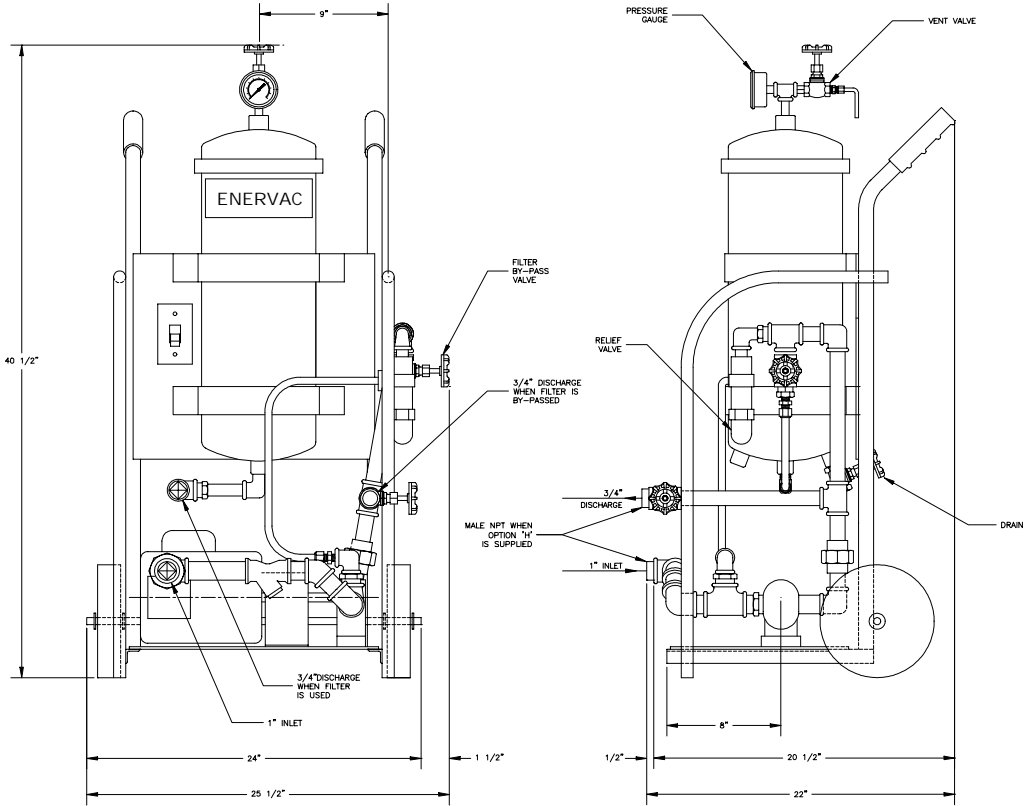
- Standard Features**
- o Easy handling balance and design
 - o Low center of gravity
 - o Broad range of elements and selectivity
 - o Filter drain valve
 - o Filter vent valve
 - o Inlet strainer
 - o Motor starter with thermal overload
 - o Pressure gauge
 - o Oil resistant Polyolefin wheels

Model nomenclature chart indicates standard and optional features available with each model.

EPF-1B — —

Elements	
Model	Selectivity
EP-718-30	30 micron
EP-718-20	20 micron
EP-718-10	10 micron
EP-718-5	5 micron
EP-718-1	1 micron
EP-718-1/2	1/2 micron
ED-718-5-A	5 micron Depth
EF-718-0-B	Fuller's Earth

Code	Options
B	Basket type strainer in place of standard "Y" type strainer
H	10 ft. of 1" dia. Suction hose and 10 ft. of 3/4" dia. Discharge hose with male connectors on one end
R	3/4" filter by-pass valve assembly with adjustable pump relief valve



Description

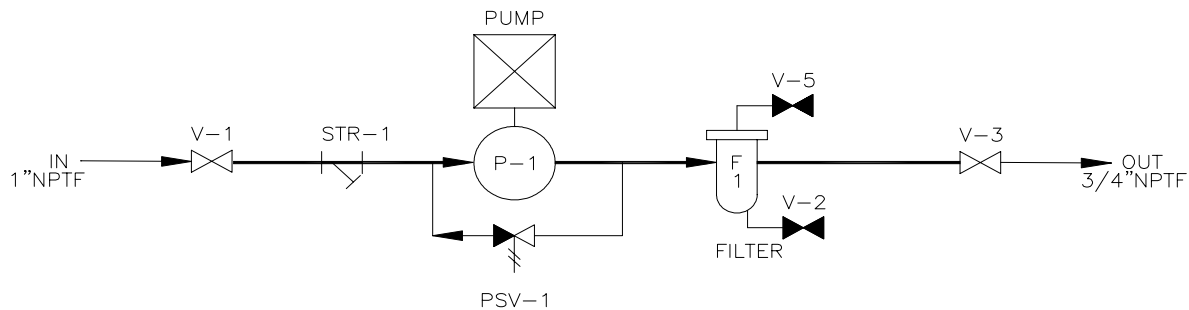
The Enervac Model EPF-1B Oil Maintenance Unit is a compact, extremely portable filtration system designed for use on-site where the contaminated oil is located. It can be readily wheeled into position nearby the sump or reservoir by a single person.

The EPF-1B is totally self-contained and only requires connection to electrical utilities for operation. The standard features of the EPF are detailed inside this brochure. This unit incorporates a reliable gear pump that includes an integral relief valve to prevent over-pressurization of the system.

A complete selection of long lasting high quality filter cartridges with various micron selectivities are available for use with the EPF-1B. Refer to the enclosed information pertaining to these elements. The design of the EPF-1B facilitates quick and easy change out of spent filter cartridges.



Flow Schematic



Deloitte
& Touche

Representative:

ENERVAC
CORPORATION

700 Franklin Blvd., Cambridge, Ontario, Canada N1R 5S9

Tel.: (519) 623-9890 • Fax: (519) 623-8250

www.enervac.com • E-mail: sales@enervac.com